

PART OF THE EAST 1/2 OF SECTION 17, T.6N., R.2W., S.L.B. & M.
GIBSON RANCHETTES SUBDIVISION NO. 3

185

TAXING UNIT: 53

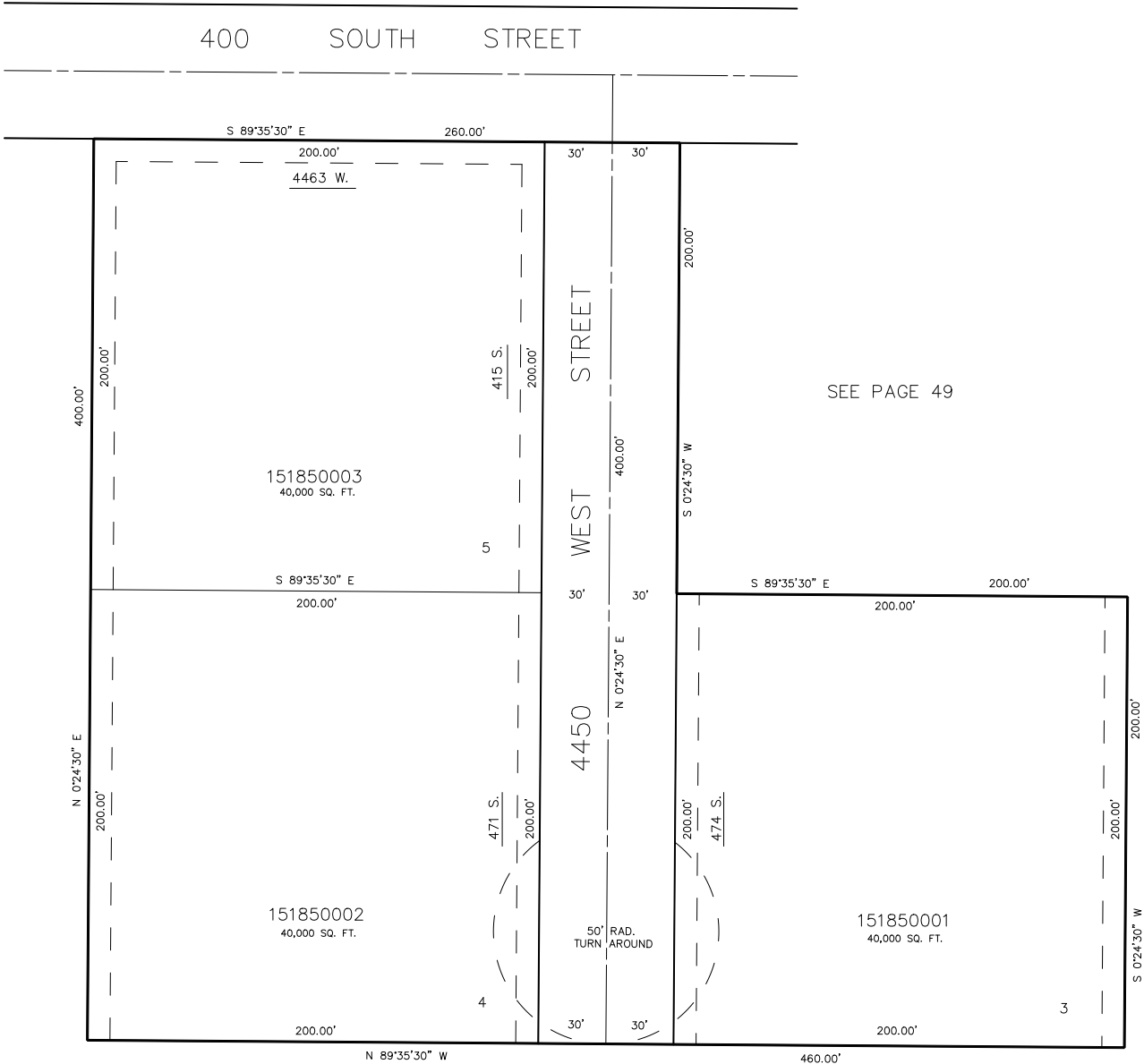
IN WEBER COUNTY

SCALE 1" = 40'

SEE PAGE 49

SEE PAGE 49

SEE PAGE 48-1



SEE PAGE 48-1

10' UTILITY & DRAINAGE EASEMENTS EACH
SIDE OF PROPERTY LINES AS INDICATED
BY DASHED LINES EXCEPT AS OTHERWISE
SHOWN.

FOR COMPLETE ENG DATA SEE
ORIGINAL DEDICATION PLAT IN
BOOK 34, PAGE 16 OF RECORDS.